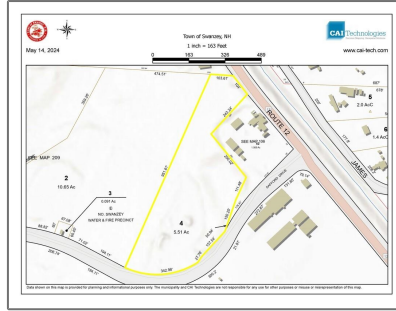
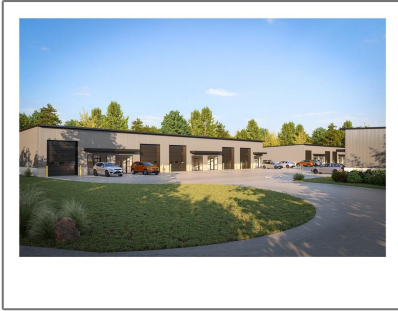


For Rent

- 234 Safford Drive, Swanzey, New Hampshire
03446



Basic Info

Property Type:	
Listing Type:	For Rent
Lot Area:	5.80 Acre
Year Built:	2024
MLS #:	5004464
Days On Market:	63

Property Details

Listing Status:	Active
Tax - Gross Amount:	\$0
Garage Capacity:	0
Zoning:	Industrial
Lot - Sqft:	252,648 Sqft
Road Frontage:	Yes
Price Per SQFT:	\$0
Development / Subdivision:	Sapphire Park

Location

Address:	234 Safford Drive
County:	NH-Cheshire
Country:	US
State:	NH
City:	Swanzey
Zipcode:	03446
Flood Zone:	No

Exterior

Foundation:	Concrete, Slab - Concrete
Roof:	Metal
Water Frontage Length:	0

Directions: **7 minutes from the Center of Keene,**

**NH. Follow Main St
to Rte 12. Or Rte
101 to Rte 12,
Safford Rd is on the
left, directly off Rte
12.**

Room [Details](#)

Room 20 **Modified Gross**
Dimensions:

Room 21 Level: **12 Months**

Baths - 3/4: **0**

Room 17 **14**
Dimensions:

Utilities

Sewer: **Public Sewer at
Street**

Heating System: **Electric, Mini Split**

Electric: **110 Volt, 220 Plug, 3
Phase, On-Site**

Utilities: **Cable - Available**

Features - **1st Floor 1/2**
Accessibility: **Bathroom, 1st Floor
Hrd Surfce Flr, No
Stairs from
Parking, One-Level
Business, Paved
Parking**

Listing [Info](#)

List Agent: **10401**

Agent [Info](#)



Cowan & Zellers
✉ info@cowanandzellers.com

