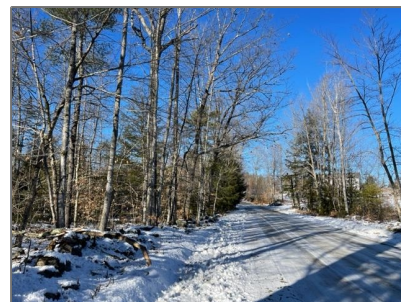
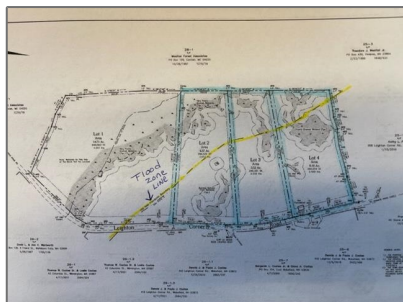


# For Sale

- Lot 2-2 Leighton Corner Road, Wakefield, New Hampshire 03872



## Basic Info

Property Type:	
Listing Type:	<b>For Sale</b>
Price:	<b>\$74,900</b>
Lot Area:	<b>6.57 Acre</b>
MLS #:	<b>4940349</b>
Days On Market:	<b>297</b>

## Property Details

Listing Status:	<b>Active</b>
Tax - Gross Amount:	<b>\$0</b>
Garage Capacity:	<b>0</b>
Zoning:	<b>Agricultural</b>
Roads:	<b>Gravel,Public</b>
Lot - Sqft:	<b>286,189 Sqft</b>
Road Frontage:	<b>Yes</b>
Price Per SQFT:	<b>\$11,400</b>
Road Frontage Length:	<b>319</b>
Easements:	<b>Yes</b>

## Location

Address:	<b>Lot 2-2 Leighton Corner Road</b>
County:	<b>NH-Carroll</b>
Country:	<b>US</b>
State:	<b>NH</b>
City:	<b>Wakefield</b>
Zipcode:	<b>03872</b>

## Exterior

Water Frontage Length:	<b>0</b>
Lot Description:	<b>Agricultural,Countr y Setting,Level,Lowla nd,Recreational,Rol ling</b>

School - Elementary:	<b>Paul School</b>
School - District:	<b>Wakefield</b>
School - Middle/Jr:	<b>Paul School</b>
School - High:	<b>Spaulding High School</b>
Flood Zone:	<b>No</b>
Directions:	<b>Rte. 16N, left onto Pine River Pond Road, left onto Leighton Corner Road and lots will be on the Left. See signs.</b>

## Interior

Basement Description:

[Residential, Recreation, Agriculture, Mixed Use, Farm](#)

## Utilities

Sewer:

**On-Site Septic Needed**

Water:

**On-Site Well Needed**

Electric:

**At Street**

Utilities:

**Cable - Available, Telephone Available**

## Listing [Info](#)

Listing Agent First Name:

**Tobi**

Listing Agent Last Name:

**Laurion**

Listing Office:

**Seven Lakes Real Estate, LLC**

## Agent [Info](#)



Cowan & Zellers

✉ [info@cowanandzellers.com](mailto:info@cowanandzellers.com)

603-225-3333 - 30 South Main Street

---

